



# STERLING DOORS

DOOR CATALOGUE

# Index Content

## Solid Timber Entrance Doors

French Doors  
Half French Doors  
Regal Doors  
Colonial Doors  
Modern Doors  
Triple Glazed Doors  
Windsor Doors  
Edwardian  
Hampton

Victorian  
Venetian Doors  
Paddington Doors  
Wrought Iron Doors  
Hand Painted Doors  
Traditional Doors  
Mediterranean Doors  
Lyon Doors

## Glass Options

## About Us

**STERLING Doors** is Australian owned Family business since 1991

Sterling Doors Sydney have worked hard and long to establish a reputation as a company with total commitment to customer service. Doors are our business & our customers know they can rely on prompt delivery, Supply only or supply & installation of your NEW door.

Sterling Doors extensive door range includes external doors and Internal doors.

All solid Maple timber doors External or Internal.

You will find a door design to suit every decorating theme and almost every architectural period, and to meet every budget requirement from low cost doors to products for the luxury home market.

An innovator in the door industry, Sterling Doors has brought stylish doors within the price reach of every customers need of every Budget of doors.

Sterling Doors is a customer focused company.

## Solid Timber Doors

Sterling Doors Solid Timber Joinery Doors, which are made of Stain-Grade or Paint-Grade Solid Pacific Maple Timber, is a perfect choice for entry or interior doors.

Doors built with Solid Timber ensures that your door can be built-to-last, a feature that veneered and engineered counterparts cannot provide, while adding and retaining that natural look of timber.

When given the option, each panel of the door can be removed and, when requested, can be fitted with our many choices of glazing/glass options in order to create that perfect glass panel door.

All our solid timber doors can be bi-folded and rebated; a service that we can provide.

**All 40mm and 35mm solid timber doors** can be installed in entry or internal setups.

**All solid engineered doors** can only be installed in internal setups.

## Solid Engineered Internal Doors

Heritage Doors  
Regal Doors  
Edwardian Doors  
Shaker Doors  
French Doors  
Colonial Doors  
Windsor Doors

## Sidelights

Solid Timber Sidelights  
Engineered Sidelights

# Solid Timber Entrance Doors

## French Doors



French 1L



French 2L



French 3L



French 4L



French 5L



French 8L



French 10L



French 15L



French 10L

WITH VENETIAN



French 1L

WITH VENETIAN

## Half French Doors



Half French 1P



Half French 2P



Half French 2L 1P



Half French 2L



Half French 3L 1P



Half French 3L



Half French 4L 1P



Half French 4L



Half French 6L 1P



Half French 6L



Half French 9L 1P



Half French 9L



Half French 1L 1P

WITH VENETIAN



Half French 1L 2P

WITH VENETIAN



Half French 6L 1P

WITH VENETIAN



Half French 6L 2P

WITH VENETIAN



Half French 9L 1P

WITH VENETIAN



Half French 9L 2P

WITH VENETIAN

# Solid Timber Entrance Doors

## Regal Doors



Regal 1P



Regal 1P (HM)

WITH HEAVY MOULDING



Regal 2P



Regal 3P



Regal 4P



Regal 4P (CB)



Regal 4P (HM CB)



Regal 5P



Regal 5P (CB)



Regal 8P



Regal 8P (HM)



Regal 8P (CB)



Regal 8P (HM CB)



Regal 10P



Regal 10P (HM CB)



Regal 21P



Regal 3G



Regal 4G



Regal 5G



Regal 7G



Special Regal R-B



Special Regal R-C



Special Regal R-D



Special Regal R-H

## Colonial Doors



Colonial 4P



Colonial 6P



Colonial Classic



Colonial 4G



Colonial 6P GL

ORCHID FROST



Special Regal R-K

# Solid Timber Entrance Doors



## Modern Doors



Felicia Glazed



Felicia



Carrera Glazed



Carrera



Ascot-1G



Ascot-2G



OD1-S Modern



OD1-P



OD2 Modern



OD3 Modern



OD4 Modern



OD5 Modern



Oxford 2G Modern



Oxford 3G Modern



Oxford 5G Modern



Oxford Triple Glazed



Grange 6G Modern



15P Modern



## Triple Glazed Doors



TRIPLE GLAZED

Oxford



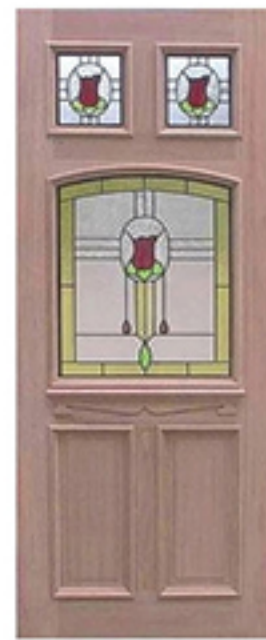
TRIPLE GLAZED

TQE Traditional



TRIPLE GLAZED

Belgravia



TRIPLE GLAZED

Federation Curve Top



TRIPLE GLAZED

Federation Flat Top



Leeds



TRIPLE GLAZED

Federation



TRIPLE GLAZED

TQF Fan-light



TRIPLE GLAZED

TQA 1L



TRIPLE GLAZED

TQC Half French



TRIPLE GLAZED

TQG

# Solid Timber Entrance Doors

## Windsor Doors



Belgravia



Calais Windsor



Edwardian-3P



Fanlight



Carolina



TQF Fan-light

TRIPLE GLAZED



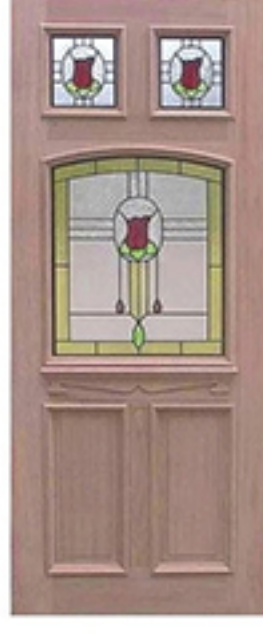
Edwardian-G



Edwardian-4L

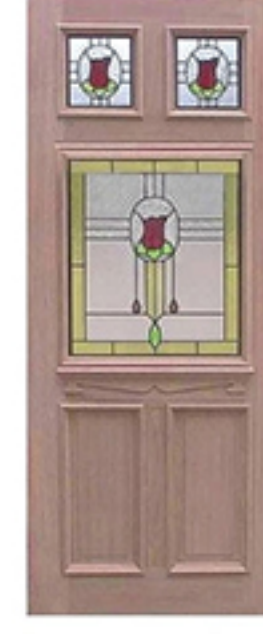


Edwardian-3L



Federation Curve Top

TRIPLE GLAZED



Federation Flat Top

TRIPLE GLAZED



Federation

TRIPLE GLAZED

## Hampton Doors



Hampton 6L



Hampton 6L

WITH LEDGE



Hampton 3L



Hampton 1L

## Victorian Doors



Victorian

## Venetian Doors



French 1L



French 10L



Half French 6L 1P



Half French 1L 1P



Half French 6L 2P



Carrera



Half French 9L 1P



Half French 9L 2P



Half French 1L 2P

# Solid Timber Entrance Doors

## Paddington Doors



Paddington 1



Paddington 1 (HM)



Paddington 1 (HM)



Paddington 1G



Paddington 1G (HM)



Paddington 1G (HMCB)



Paddington 8G



Paddington 8G (HM)



Paddington 8G (HMCB)

## Wrought Iron Doors



Wrought Iron



Wrought Iron 1L

## Hand Painted Doors



2 Storks

DOUBLE GLAZED



White Storks

DOUBLE GLAZED



Planter Box

DOUBLE GLAZED

## Traditional Doors



Traditional



Traditional

HMCB WITH 6-DIAMOND



Traditional Bifold

HMCB WITH 6-DIAMOND



Traditional Combination

HMCB WITH 6-DIAMOND



TQE Traditional

TRIPLE GLAZED

## Mediterranean Doors



Felicia



Felicia



Carrera



Carrera

## Lyon Doors



Lyon-1

# Solid Engineered Internal Doors

## Heritage Doors



Heritage 1



Heritage 2



Heritage 3



Heritage 4



Heritage 5



Heritage 6



Heritage 7



Heritage 8



Heritage 9



Heritage 10

## Regal Doors



Regal V1P



Regal V2P or



Regal V3P



Regal V4P



Regal V5P



Special Regal V4P

## Edwardian Doors



Edwardian V1P



Edwardian V3P



Edwardian V4P



Edwardian V1G



Special Regal V5P



# Solid Engineered Internal Doors

## Shaker Doors



Shaker 1



Shaker 2



Shaker 3

## French Doors



French 1L



French 10L

## Colonial Doors



Colonial 4P



Colonial 4G

## Windsor Doors



Victorian-P

## Glass Options for All Doors with Glass Panels



Cathedral



Clear / Toughened



Clear Bevel



Comfort Plus Clear



Comfort Plus Neutral



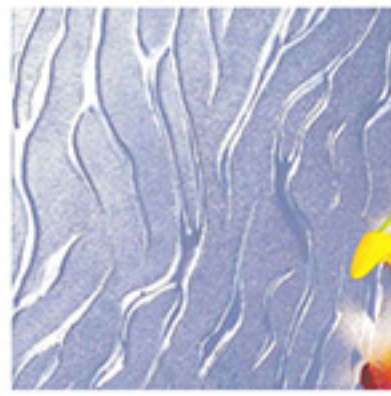
Toughened Clear Bevel



Seadrift



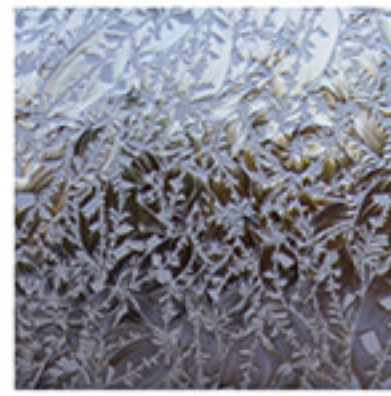
Double Glazed



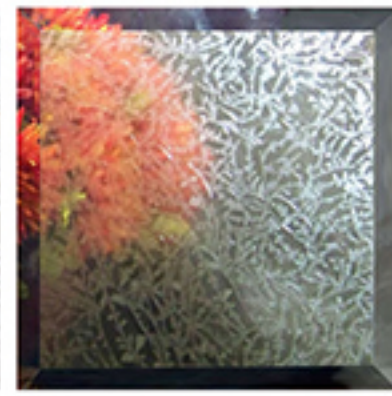
Flame



Frosted Bevel



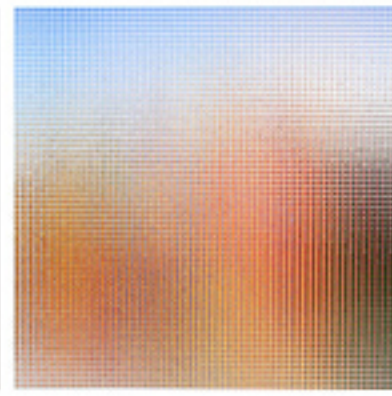
Gluechip



Gluechip Bevel



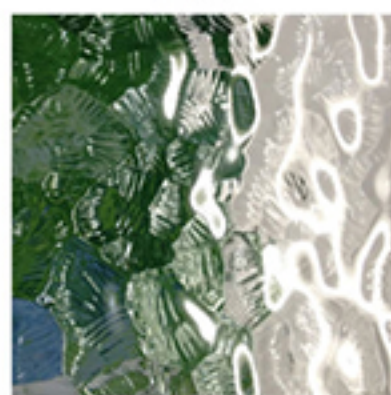
Translucent



Satinlite



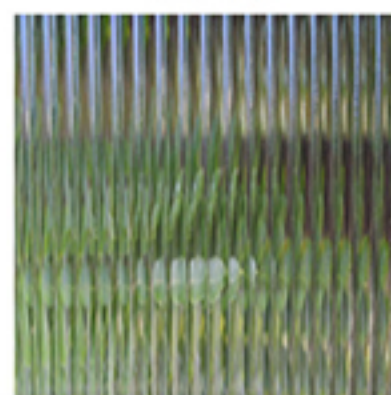
Grey Tint



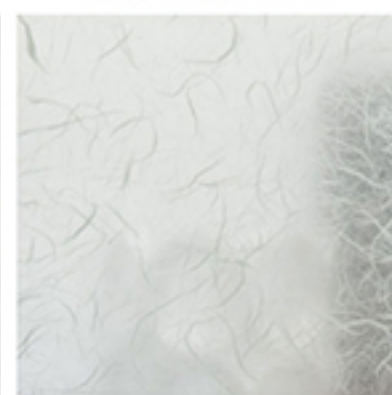
Krystalite



Laminated Clear



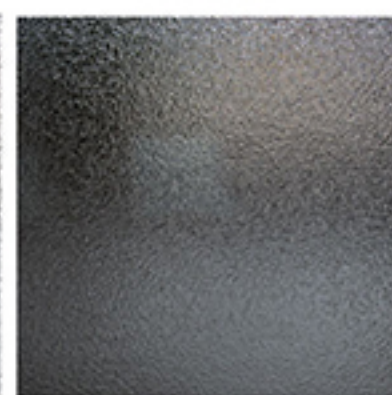
Narrowline



Ricepaper

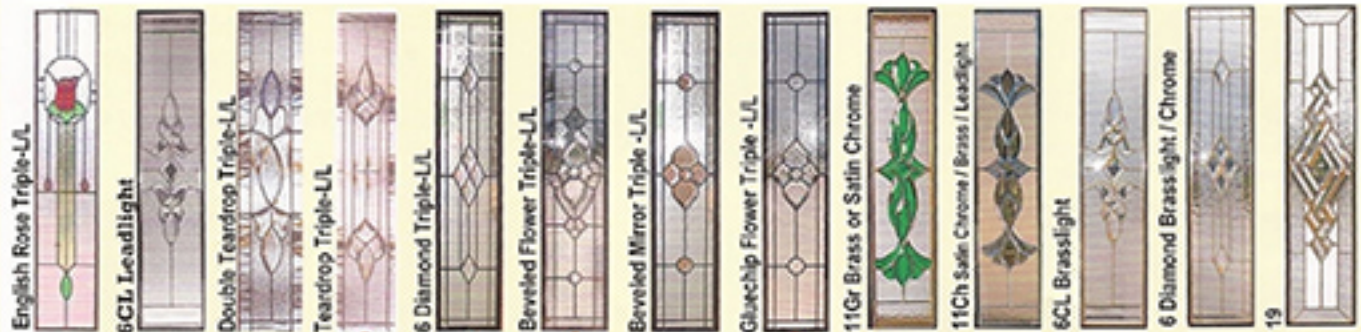
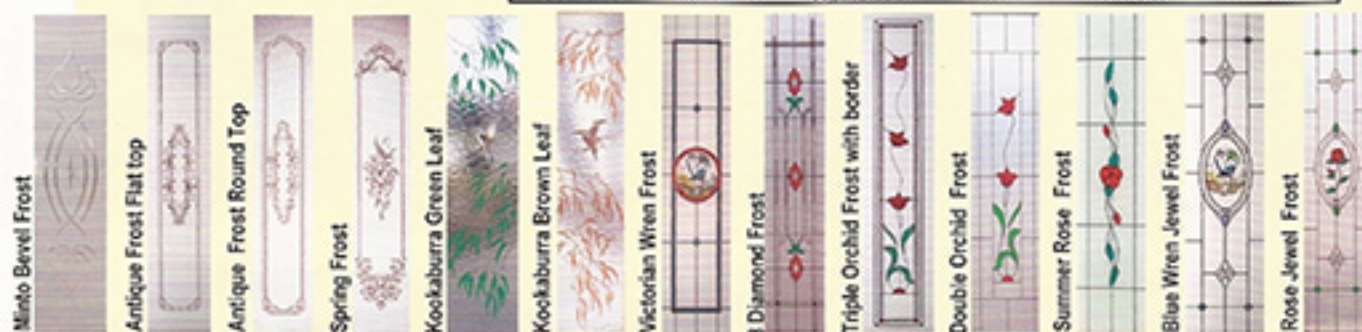


Spotswood



Spotswood Grey

You can choose any on the right for the centre of the Rose Jewel Frost



Above Lead-light, Chrome-light & Brass-light panels are Triple Glazed allowing for easy maintenance and security  
 • Red Spot single glazed leadlight is also available

# Sidelights

## Solid Timber Sidelights



Belgravia



Calais Windsor



Carrera Glazed



Carrera



Colonial 2G



Colonial 2P



Colonial 3P GL



Colonial 3P



Colonial Classic



Edwardian 3-G



Edwardian 3-P



Edwardian-2L



Federation Triple Glazed



Felicia Glazed



Felicia



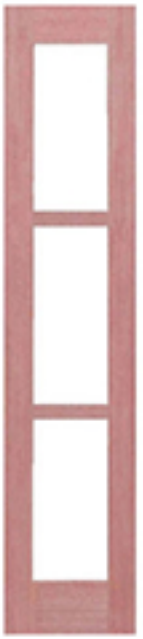
French 1L



French 1L / Venetian



French 2L



French 3L



French 4L



French 5L



Half French 2L



Half French 3L



Leeds Modern



Paddington 4G



Regal 1P



Regal 1P (HM)



Regal 2P



Regal 3G



Regal 3P

# Sidelights

## Solid Timber Sidelights



Regal 4G



Regal 4P



Regal 5G



Regal 5P



Regal 5P (HM CB)



Regal 7G



Special Regal R-L



Special Regal R-S



TQB Triple Glazed



TQD Triple Glazed



TQH Oval Triple



Traditional



Traditional



Victorian



Wrought Iron

## Solid Engineered Sidelights



Colonial 2G



Colonial 2P



Regal V1P



Regal V2P

## Sydney Showroom

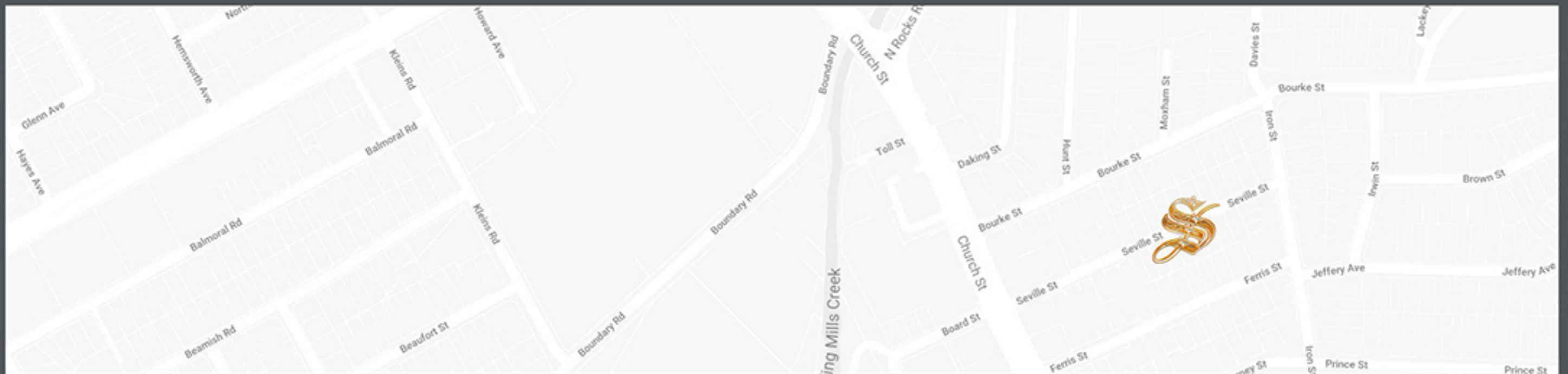
10 Seville Street,  
North Parramatta NSW 2151

**(02) 9613 3579**

info@sterlingdoors.com.au

www.sterlingdoors.com.au

Monday	9:30am - 3:00pm
Tuesday	9:30am - 3:00pm
Wednesday	9:30am - 3:00pm
Thursday	9:30am - 2:30pm
Friday	9:30am - 3:00pm
Saturday	10.00am - 1.00pm
Sunday	Closed



### STERLING DOORS Warranty Terms & Conditions

Insulated Glass, STERLING DOORS warrants all insulated glass delivered to the original consumer or its authorized dealer against, failure of the air seal for a five (5) year period from the date of manufacture—decorative glass for five (5) years from date of manufacture. This Warranty does not include cracked or broken glass or damage to the product resulting from accident, abusive handling or misuse. Should there be such a failure of the air seal within the Limited Warranty period, Sterling doors, shall provide a replacement piece of insulated glass at their discretion. The consumer will be responsible for installation of the glass.

STERLING DOORS, will not be responsible for repainting, refinishing or similar activities involved & replacing of glass panels. Timber Doors STERLING DOORS, warrants to the original consumer the quality of workmanship & materials of timber items to be free from defects which may render the product unserviceable for two (2) years from date of purchase. To comply within Limited Warranty, it is the consumer's responsibility to properly care for & protect all timber products: \* Immediately after fitting, & prior to hanging, the entire door, interior & exterior, top & bottom edges & hinge checkouts, must receive a minimum of two (2) coats of undercoat & two (2) coats of Oil paint or equivalent grade of recommended paint, varnish, or sealer to prevent undue absorption of moisture which may cause warping to occur. Acrylic, Water & Solvent based primer / paints or thinner are not suitable for treatment of Timber Doors. \* Texture and colour variations do not constitute defects, as timber is a natural product. \* Doors must be stored flat, in a dry place, avoid freshly plastered rooms or other damp areas, and not in direct sunlight. \* All doors are supplied unfinished. \* Regular maintenance to prevent breakdown and exposure to the element should be provided to prevent deterioration. \* Doors must be inspected upon arrival for visible defects and all claims based thereon must be filled within seven (7) days. No warranty applied if the door has been altered. \* A change in climatic condition can cause slight movement in the component of some solid timber doors, these are not considered a defect. \* Warping refers to distortion within the door itself and not to its relationship to the doorjamb or frame in which it is hung. Warp exceeding 5mm shall be considered a defect. \*STERLING DOORS, agrees to repair or replace at its option, unfinished and in the form originally supplied and without charge, any door found to be defective within the meaning of the warranty. \*STERLING DOORS, or the Seller will not be held responsible for charges of hanging, painting or other charges arising from the replacement of doors. \*STERLING DOORS, recommends that if your door receives direct sunlight it should be painted in a LIGHT reflective colour, DARK colours may cause shrinkage due to change of moisture content. LIGHT coloured paint is a more durable finish for harsh conditions. \*All Entrance doors must be hung in a Weather Protected areas. Water damage will void our warranty. \* We recommend that a minimum of 3 hinges to be used on Standard Entrance Doors and 4 hinges on all oversized Doors. \* Door profiles can change without notice due to Stock availability. Every effort will be made to maintain our Standard profiles. This will not be considered a defect. Solid Timber Joinery Doors have Solid timber Styles, Rails and Mullions with laminated timber or MDF veneered fielded panels Engineered Joinery doors use veneered laminated timber styles, rails & mullions with veneered MDF fielded panels. Suitable for either paint or stain. (For internal use Only) Experience has demonstrated that warp occurs after doors have been delivered to storage or building sites, it is usually due to improper storage or adverse moisture conditions after hanging & not to faulty manufacture. The manufacturer will accept no responsibility for doors when moisture content of the timber falls below 10% or exceeds 16%. Colour Photograph as shown in this catalogue do not always reflect the actual true colours. All Factory glazed doors comply with Australian Glazing Standard AS 1288-2006

**EXCLUSIONS** The guarantee against warp does not apply to the following \*35mm and 40mm thick doors wider than 920mm or higher than 2140mm \*Doors that are improperly hung or do not swing freely. \*External doors which have been painted dark colours or different colours on each face.

**MAXIMUM ALLOWABLE TRIMMING OF DOORS** 10mm each side from solid constructed joinery engineered doors 30mm each side from solid timber joinery doors with 130mm styles 20mm each side from solid timber joinery doors with 110mm styles 30mm from either the Top or Bottom rails Anything outside the above please consult with STERLING DOORS.

### OVERHEAD PROTECTION

All Entrance Doors and External Doors Must have adequate Overhead Protection Door protection is a must, due to our extreme weather climate changes. Timber Doors are more susceptible to weather changes than other non timber doors. (Steel, PVC, Aluminium, etc.) Doors that are installed in a fully exposed area including doors opening out will not be covered by our warranty unless there is adequate overhead protection. Painting exterior doors using a different colour on each side will cause an uneven heat / moisture absorption, particularly for doors exposed to the element. Different colours can cause the door to warp. An adequate awning must be installed to reduce the effects of weather exposure. You should avoid getting the doors wet, even after finishing. The Table below shows the most appropriate overhead protection required for the house location and direction of the door. Please select the climate zone for where the house is located in, then the direction the door will be facing. The formula will then show the depth (A) for the overhead awning based on the height (B) from the base of the door to the underside of the awning. The minimum width of the overhead protection should be no less than the door frame width. Doors that receive direct sunlight must be painted in LIGHT reflective colours, DARK colours absorb heat accelerating door movement and shrinkage due to a change of moisture content which could promote warping and bowing. Glazed doors can amount to leaking seals. Timber Doors are not waterproof. Loose Beading to be on the outside.

Door Direction				
Climate	North	South	East	West
Coastal	A= B	A= 1/2B	A=1/2B	A=B
Tropical	A= B	A= B	A= B	A= B
Arid	A= 2B	A= 1/2B	A= 1/2B	A= 2B
Mild	A= B	A= 1/2B	A= 1/2B	A= B